

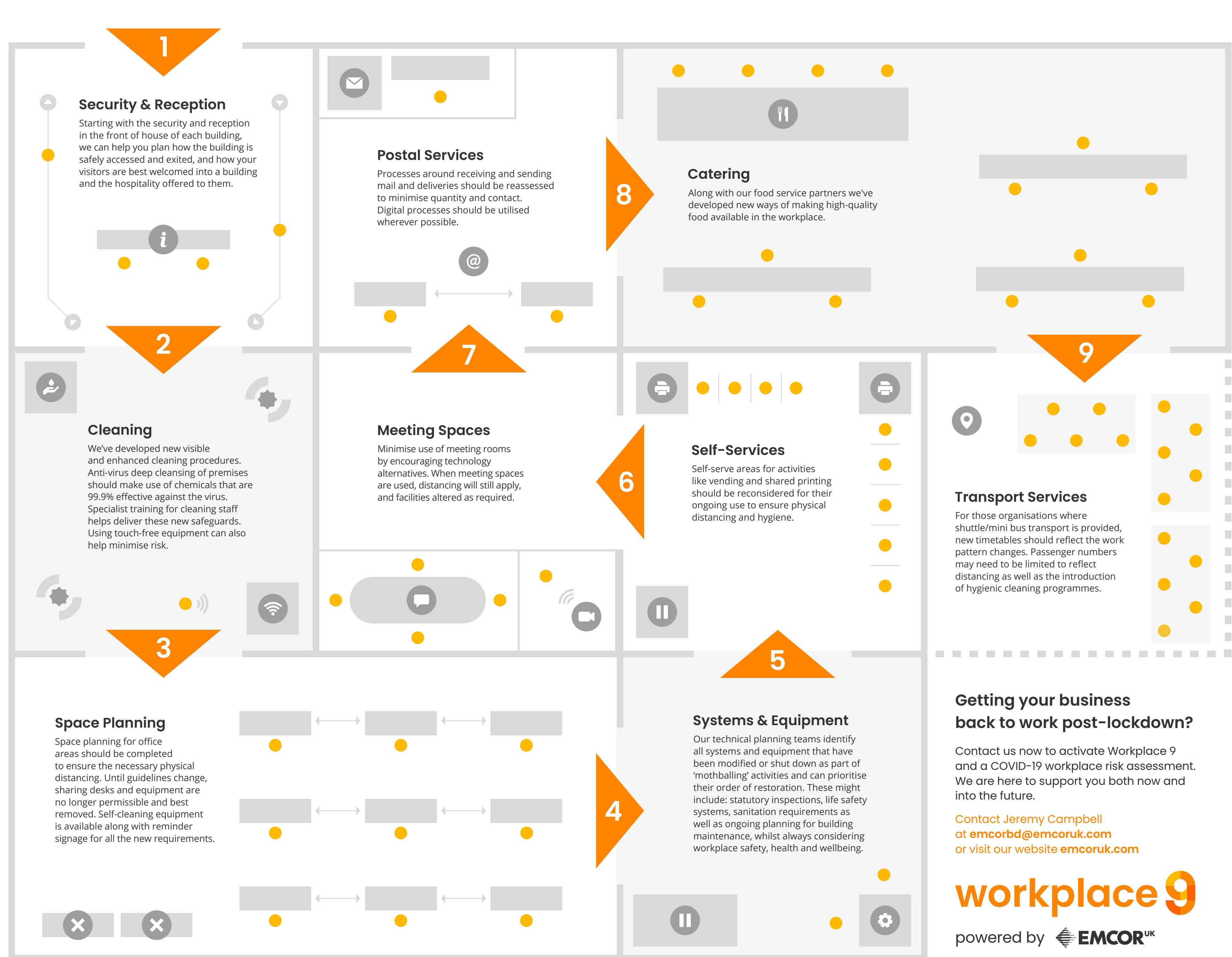
# back to work?

## worried? or ready?

As one of the country's leading facilities management service providers we've been looking after workplaces throughout the lockdown period.

To ensure best practice, we've developed a comprehensive COVID-19 standard of excellence. This identifies exactly what is needed to maximise your safety and get your business back up to speed, not only for now, but into the future.

We call it **Workplace 9**. It covers the 9 key areas and services of a workplace that need new and careful consideration.



### Getting your business back to work post-lockdown?

Contact us now to activate Workplace 9 and a COVID-19 workplace risk assessment. We are here to support you both now and into the future.

Contact Jeremy Campbell at [emcorbd@emcoruk.com](mailto:emcorbd@emcoruk.com) or visit our website [emcoruk.com](http://emcoruk.com)

**workplace 9**

powered by **EMCOR<sup>UK</sup>**